

# Where is Artificial Intelligence Making a Big Difference?

---

(Artificial Intelligence Series, Part 1 of 4)

#G013



# MODERATOR & PANELISTS

---



**RICHARD  
TROMANS**  
CEO,  
ARTIFICIAL LAWYER  
& Tromans  
Consulting



**NOAH WAISBERG**  
Co-Founder & CEO,  
Kira Systems



**CHRISTINA  
WOJCIK**  
VP of Solutions,  
Seal Software



**BILL  
KOCH**  
Chief Knowledge Officer,  
Womble Bond Dickinson  
(US) LLP



**JAMES  
LEE**  
Co-Founder & CEO,  
LegalMation



**MARTIN  
BLACKBURN**  
Sales Director,  
Luminance Technologies

# What is Artificial Intelligence?



## WHAT IS THE RATE OF AI ADOPTION BY LAW FIRMS?

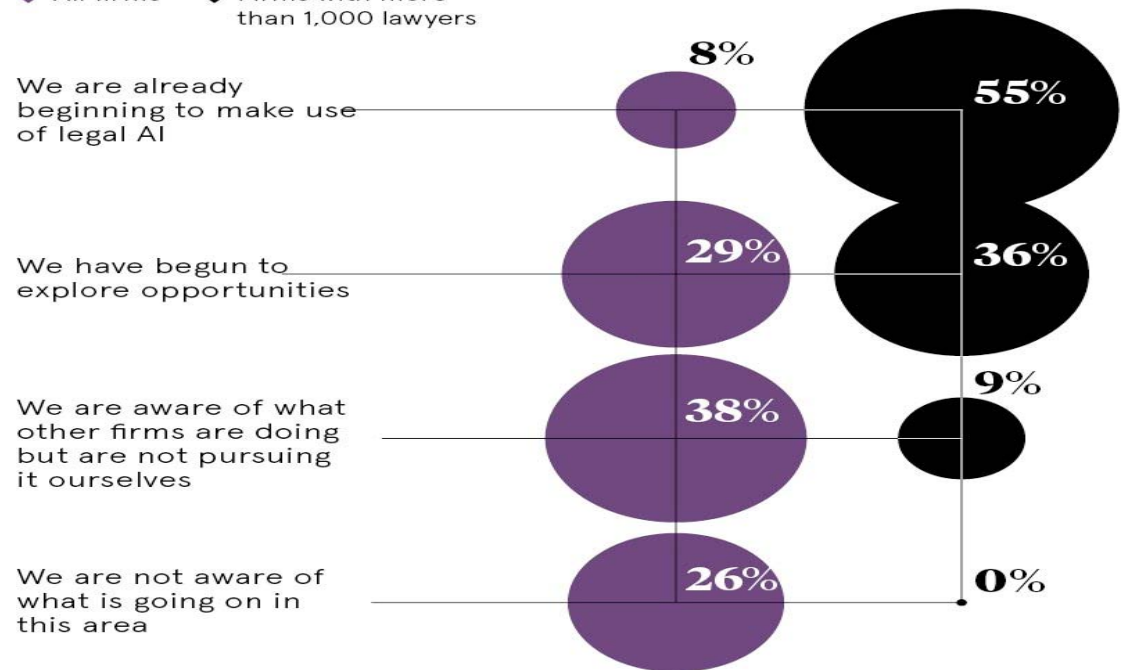
WHAT CHANGES TOWARDS AI HAVE YOU SEEN ORGANIZATIONS MAKE OVER THE PAST FIVE YEARS?

---

### Law firms' stance on legal AI tools

Survey of US-based law firms

- ◆ All firms
- ◆ Firms with more than 1,000 lawyers



# WHERE IS AI ACTUALLY HAVING A NOTABLE IMPACT ON LAW FIRMS AND HOW THEY DO WORK FOR CLIENTS?

---





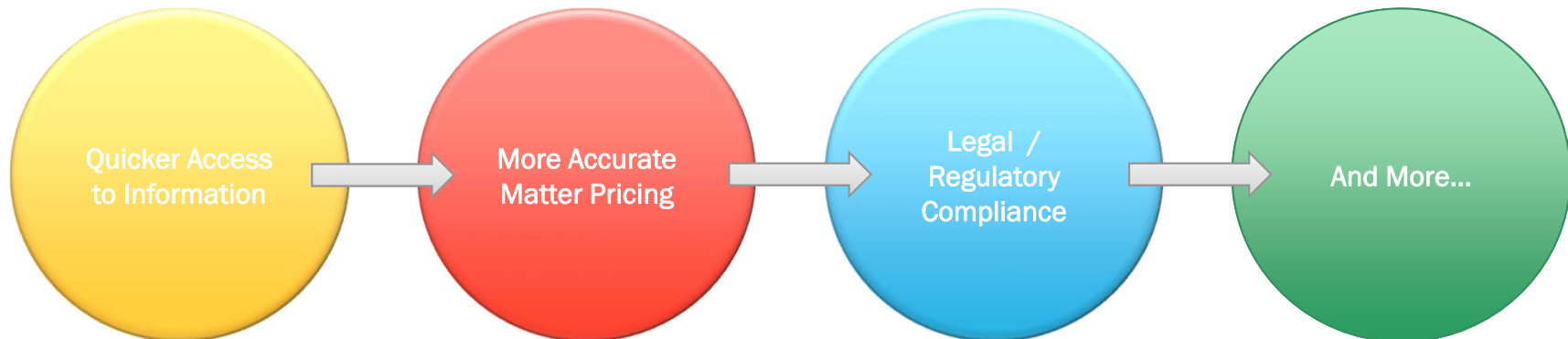
# HOW MUCH MORE EFFICIENT ARE FIRMS WHEN THEY USE AI FOR CERTAIN TASKS?



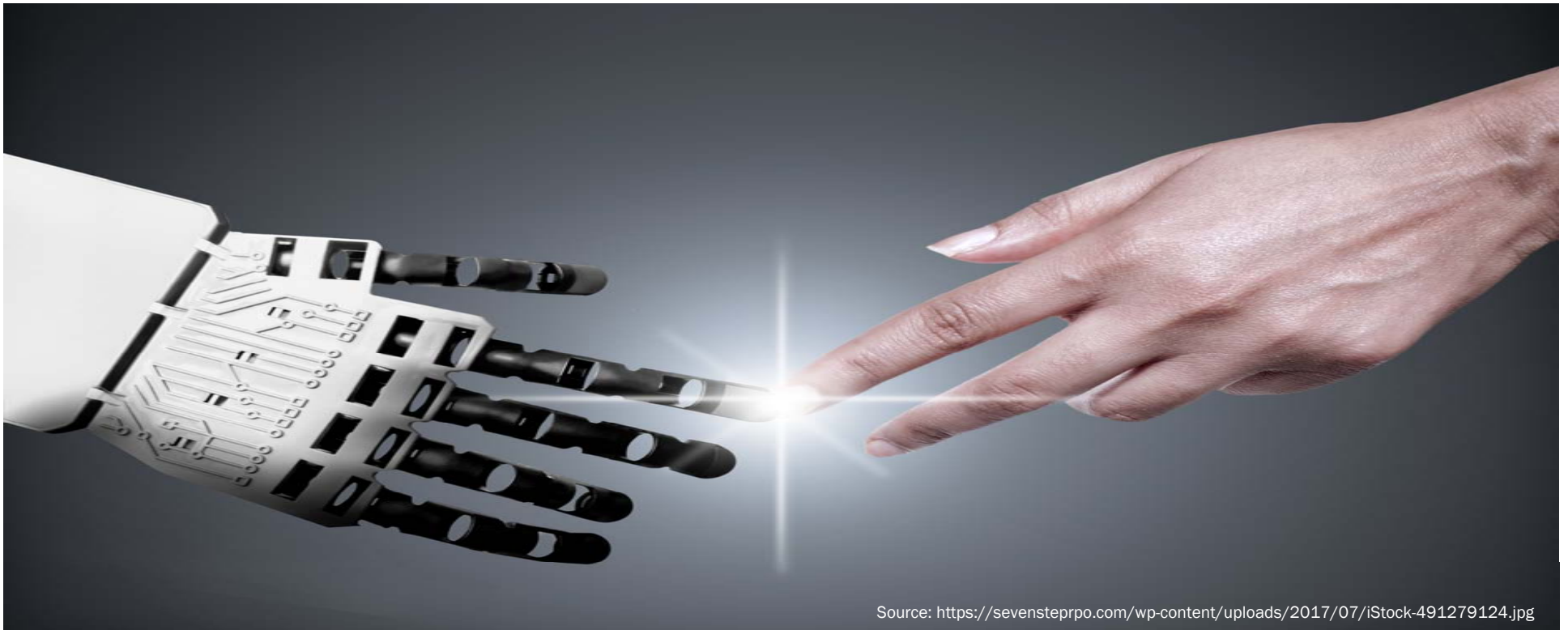
Source: <https://ayehu.com/4-tips-for-better-it-operational-efficiency/>

## WHAT ABOUT ADDITIONAL INSIGHTS INTO LEGAL DATA? HOW MUCH IMPACT CAN AI SYSTEMS HAVE THERE, I.E. MORE THAN JUST EFFICIENCY?

---



## HOW DOES “AI” TRANSLATE TO A BETTER CLIENT RELATIONSHIP?



Source: <https://sevensteprpo.com/wp-content/uploads/2017/07/iStock-491279124.jpg>



# IS AI HAVING AN IMPACT INSIDE CORPORATE? ARE THEY REALLY USING THIS TECHNOLOGY AS WELL? IF SO, HOW?



CURRENT PERCEPTIONS OF AI USE IN CORPORATE LEGAL DEPARTMENTS

	TOTAL (N=207)	DEPT. < 6 ATTYS (N=105)	DEPT. 6-10 ATTYS (N=30)	DEPT. 11+ ATTYS (N=72)
Not familiar with AI in Corp Legal	34%	45%	35%	30%
Still in beta/infancy	6%	7%	7%	6%
Could be effective/helpful	6%	2%	7%	11%
Best suited for large departments	5%	6%	-	6%
Negative/can't replace humans	8%	7%	7%	19%
None	22%	27%	27%	14%

Source: [Thomson Reuters Case Study](#)

# WHAT ARE THE CHARACTERISTICS THAT MAY MAKE AN ORGANIZATION SUITABLE FOR AI?

---

Executive Level Support for AI

Organizational and Cultural Pliability

Understands the necessary roles required for AI

Can quickly identify where AI brings value

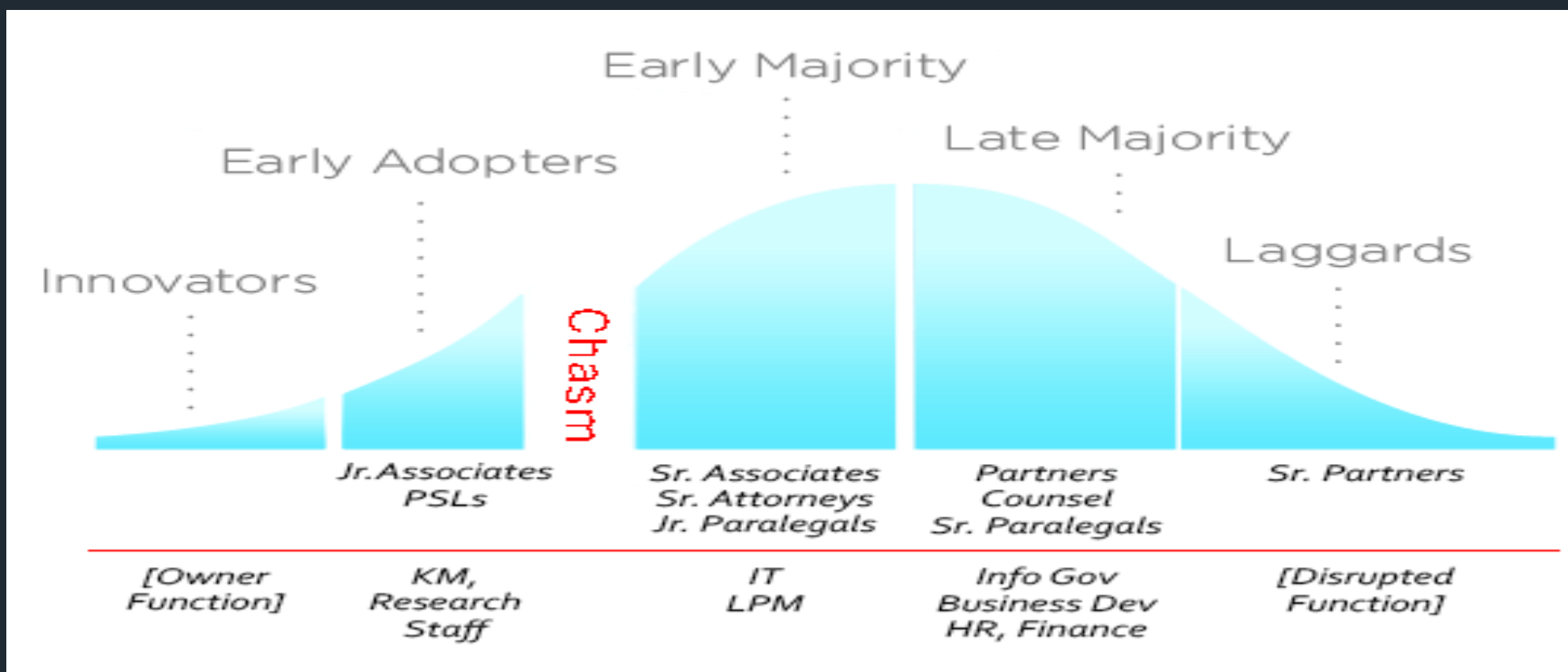
# WHAT'S THE FUTURE OF AI WITHIN LAW FIRMS?

---



Source: <http://www.sigurdsonpost.com/wp-content/uploads/2018/01/Law-Firm-Bus-Model-2.jpg>

# WHO IN A LAW FIRM IS MOST LIKELY TO SEE THE DIFFERENCE? THE PARTNERS, THE ASSOCIATES, THE IT TEAM?



Source: <https://10.wp.com/biglawkm.com/wp-content/uploads/2017/07/chasm-in-law-firm-2.png?w=541>

**THANK YOU!**

---

