

Microsoft Exchange Server 2013 Spotlight

What's Different and Why Should You Consider Upgrading



Presented by Eli Nussbaum
Keno Kozie Associates, Ltd.

enussbaum@kenokozie.com



New Features

- Exchange Administration Center
- Architecture Revision
- Information Store Revision
- Public Store Changes
- PowerShell Enhancement
- Data Loss Protection (DLP)
- Outlook Web App Enhancement
- Built-in AntiMalware

Exchange Administration Center

◆ In

- ◆ Exchange Administration Center (EAC)

◆ Out

- ◆ Exchange System Manager (Exchange 2000 and 2003)
- ◆ Exchange Management Console (Exchange 2007 and 2010)

Exchange Administration Center

- ◆ Enhanced version of Exchange 2010's Exchange Control Panel (ECP)
- ◆ Completely Web based
- ◆ Shares 'look' of OWA
- ◆ Multi-browser Support (IE, Chrome, Safari for Windows and Firefox)
- ◆ Role Based Access Control (RBAC) User Interface
- ◆ No more MMC!
- ◆ No more reliance on IIS, Windows Remote Management (WinRM)
- ◆ Faster

Exchange Administration Center Supported Web Browsers

Web Browser	Windows XP and Windows Server 2003	Windows Vista	Windows 7 and Windows Server 2008	Windows 8 and Windows Server 2012	Mac OSX	Linux
Internet Explorer 8	Supported	Supported	Premium	Unsupported	Unsupported	Unsupported
Internet Explorer 9	Unsupported	Supported	Premium	Unsupported	Unsupported	Unsupported
Internet Explorer 10 or later	Unsupported	Supported	Premium	Premium	Unsupported	Unsupported
Firefox 11 or later	Supported	Supported	Premium	Premium	Premium	Supported
Safari 5.1 or later	Unsupported	Unsupported	Unsupported	Unsupported	Premium	Unsupported
Chrome 18 or later	Supported	Supported	Premium	Premium	Premium	Unsupported

Exchange Administration Center

The screenshot shows the Exchange Administration Center (EAC) interface in a browser window. The address bar displays <https://exserver1.contoso.com/ecp/default.aspx>. The page title is "Mailboxes - Microsoft Exchange". The navigation pane on the left includes: Recipients (selected), Permissions, Compliance Management, Organization, Protection, Mail Flow, Mobile, Public Folders, Unified Messaging, Servers, and Hybrid. The main content area shows a breadcrumb trail: Mailboxes > Groups > Resources > Contacts > Shared > Migration. Below this is a toolbar with icons for adding, editing, deleting, searching, and refreshing. A table lists the mailboxes:

DISPLAY NAME	MAILBOX TYPE	E-MAIL ADDRESS
Administrator	User	Administrator@contoso.com
Paul Robichaux	User	PR@contoso.com
Amy Eisenberg	User	AE@contoso.com
Brian K. Winstead	User	BW@contoso.com
Lavon Peters	User	LP@contoso.com
Deirdre P. Redmond	User	DPR@contoso.com
Tony Redmond	User	TRedmond@contoso.com
Eoin P. Redmond	User	EPR@contoso.com
Kevin A. Laahs	User	KAL@contoso.com

At the bottom of the table, it says "1 selected of 9 total". To the right of the table, the details for the selected mailbox, Tony Redmond, are displayed:

Tony Redmond
User mailbox
TRedmond@contoso.com
Title:
Office: Dublin
Work phone: +353 1 2070805

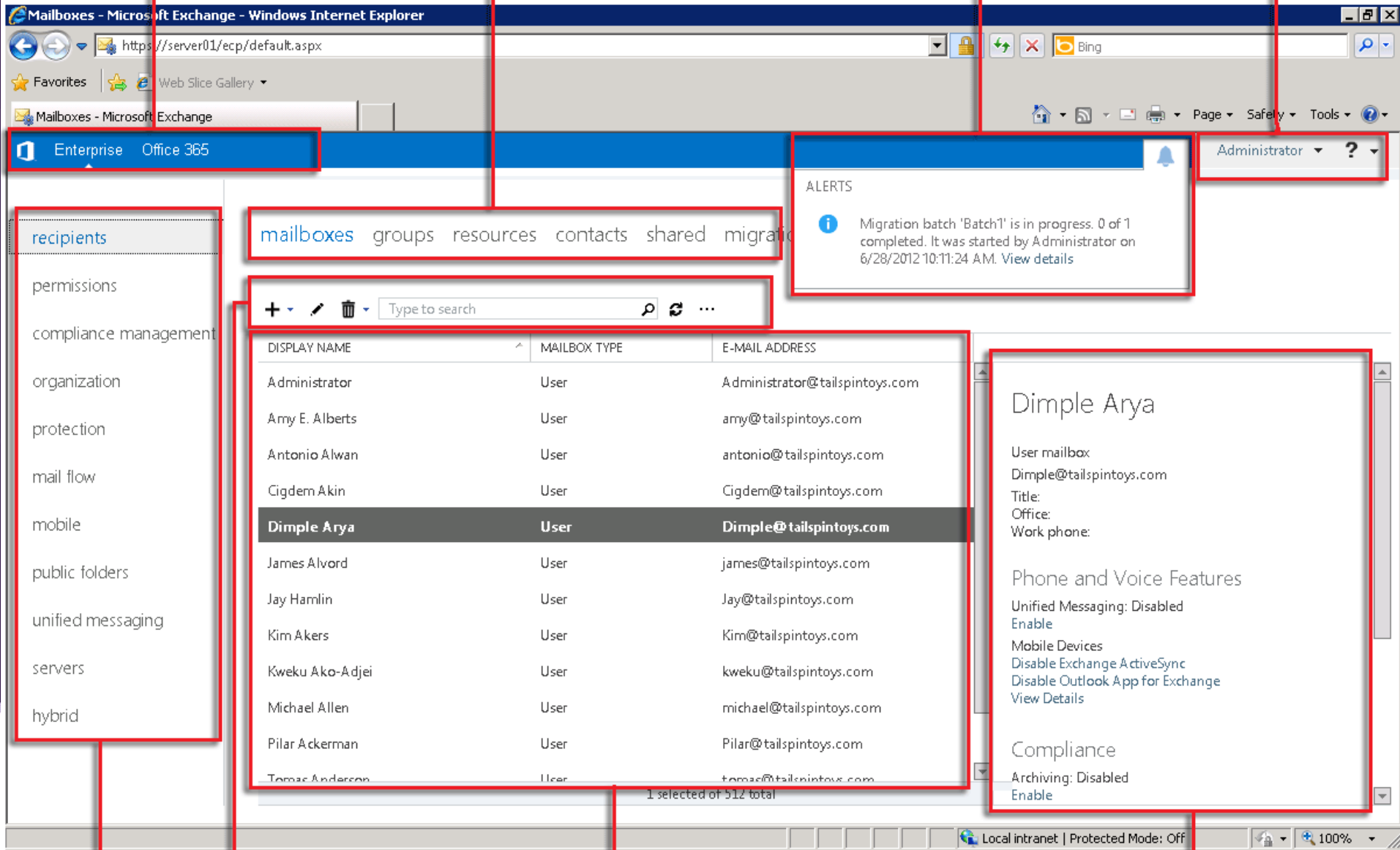
Phone and Voice Features
Unified Messaging: Disabled
Enable
Mobile Devices
Disable Exchange ActiveSync
Disable Outlook App for Exchange
[View Details](#)

Cross-premises navigation

Tabs

Notifications

Me tile and Help



- recipients
- permissions
- compliance management
- organization
- protection
- mail flow
- mobile
- public folders
- unified messaging
- servers
- hybrid

mailboxes groups resources contacts shared migration

+ - ✎ 🗑️ Type to search 🔍 ↻ ...

DISPLAY NAME	MAILBOX TYPE	E-MAIL ADDRESS
Administrator	User	Administrator@tailspintoys.com
Amy E. Alberts	User	amy@tailspintoys.com
Antonio Alwan	User	antonio@tailspintoys.com
Cigdem Akin	User	Cigdem@tailspintoys.com
Dimple Arya	User	Dimple@tailspintoys.com
James Alvord	User	james@tailspintoys.com
Jay Hamlin	User	Jay@tailspintoys.com
Kim Akers	User	Kim@tailspintoys.com
Kweku Ako-Adjei	User	kweku@tailspintoys.com
Michael Allen	User	michael@tailspintoys.com
Pilar Ackerman	User	Pilar@tailspintoys.com
Tomas Anderson	User	tomas@tailspintoys.com

1 selected of 512 total

ALERTS

i Migration batch 'Batch1' is in progress. 0 of 1 completed. It was started by Administrator on 6/28/2012 10:11:24 AM. [View details](#)

Dimple Arya

User mailbox:
Dimple@tailspintoys.com
Title:
Office:
Work phone:

Phone and Voice Features

Unified Messaging: Disabled
[Enable](#)

Mobile Devices
[Disable Exchange ActiveSync](#)
[Disable Outlook App for Exchange](#)
[View Details](#)

Compliance

Archiving: Disabled
[Enable](#)

Feature pane

Toolbar

List view

Details pane

Architecture Revision

Server Role Changes

Consolidation of Server Roles

◆ Exchange 2007/2010

- ◆ Client Access Server
- ◆ Edge Transport Server
- ◆ Hub Transport Server
- ◆ Mailbox
- ◆ Unified Messaging

◆ Exchange 2013

- ◆ Client Access Server
 - ◆ Client Access Service
 - ◆ Front End Transport Service
- ◆ Mailbox Server
 - ◆ Mailbox Services
 - ◆ Transport Services
 - ◆ Hub Transport Service
 - ◆ Mailbox Transport Service

Information Store Revision

- ◆ Now called “Managed Store”
- ◆ Rewritten in C#
- ◆ Each database is assigned a single worker process
 - ◆ Previous Versions - A single Store.exe process
 - ◆ Exchange 2013 - A unique Microsoft.Exchange.Store.Service.exe for each database

Public Store Changes

- ◆ Public Folders are not going away!
- ◆ No Longer Managed via Separate Public Folder Management Console
- ◆ Management via the EAC
- ◆ Public Folders are now Public Folder Mailboxes residing within standard mailbox databases

Data Loss Protection (DLP)

- ◆ Add Additional Info

Outlook Web App Enhancement

- ◆ Screen Optimized Modes
 - ◆ Desktop - Optimized User Interface for laptops and larger devices with keyboards and mouse.
 - ◆ Touch-Wide - Optimized User Interface for tablet size screens with touch input.
 - ◆ Touch-Narro - Optimized User Interface for phone size screens with a narrower UI for touch.
- ◆ Windows 8 Style

Outlook Web App Enhancement

◆ Unified Look



In-Place Hold

Litigation Hold and eDiscovery

- ◆ Place user mailboxes on hold and preserve mailbox items immutably
- ◆ Preserve mailbox items deleted by users or automatic deletion processes such as Message Records Management (MRM)
- ◆ Use query-based In-Place Hold to search for and retain items matching specified criteria
- ◆ Preserve items indefinitely or for a specific duration
- ◆ Place a user on multiple holds for different cases or investigations
- ◆ Keep In-Place Hold transparent from the user by not having to suspend MRM
- ◆ Enable In-Place eDiscovery searches of items placed on hold

Built-in AntiMalware

- ◆ Add Additional Info

In-Place Hold

Litigation Hold and eDiscovery

- ◆ Additional differences between 2010

Why Should Your Firm Upgrade to Exchange 2013?

Assuming you don't find the feature updates compelling

- ◆ End-of-Life of Legacy Exchange
 - ◆ Exchange 2003
 - ◆ Mainstream Support End Date - **April 14, 2009**
 - ◆ Extended Support End Date - April 8, 2014
 - ◆ Exchange 2007
 - ◆ Mainstream Support End Date - **April 10, 2012**
 - ◆ Extended Support End Date - April 11, 2017
 - ◆ Exchange 2010
 - ◆ Mainstream Support End Date - January 13, 2015
 - ◆ Extended Support End Date - January 14, 2020

What Hurdles Are There To Upgrading?

- ◆ New Interface
- ◆ No Direct Upgrade Path from Exchange 2003

Questions?

- ◆ E-mail: enussbaum@kka.com
- ◆ Phone: 312-676-5908