

# The Modern Enterprise Desktop

Moving Forward with Ease  
August 20, 2013



# Presenters

- ◆ Angela Dowd - Burns & Levinson LLP
- ◆ Tim Egan - Bingham McCutchen LLP
- ◆ Phillip Lindsey - Mayer Brown

# Moderators

- ◆ Michael Bruckner - mindSHIFT
- ◆ Sean Donahue- RES Software

# Small Firm Case Study



# Small Firm Case Study

## BURNS & LEVINSON LLP

- ◆ Windows 7 Enterprise SP1 with Office 2007, Microsoft Deployment Toolkit, and heavy use of group policy preferences
- ◆ Migrated way back in 2010
- ◆ How to keep the desktop up-to-date
- ◆ Applications whitelisting, perhaps VDI

# Mid-Size Firm Case Study



# Mid-Size Firm Case Study

## Bingham McCutchen

- ◆ “A Microsoft Shop”
- ◆ Desktops: Windows 7 SP1 with Office 2010.
  - ◆ Language packs include Chinese (PRC), German, Japanese
- ◆ Separation of user data to support global needs of firm
- ◆ Global Citrix/Xen VDI environment
- ◆ Large Autonomy footprint (iManage, EMM, Records, Conflicts, IDOL, luS)
- ◆ Extensive suite of 300 + applications

# Mid-Size Firm Case Study

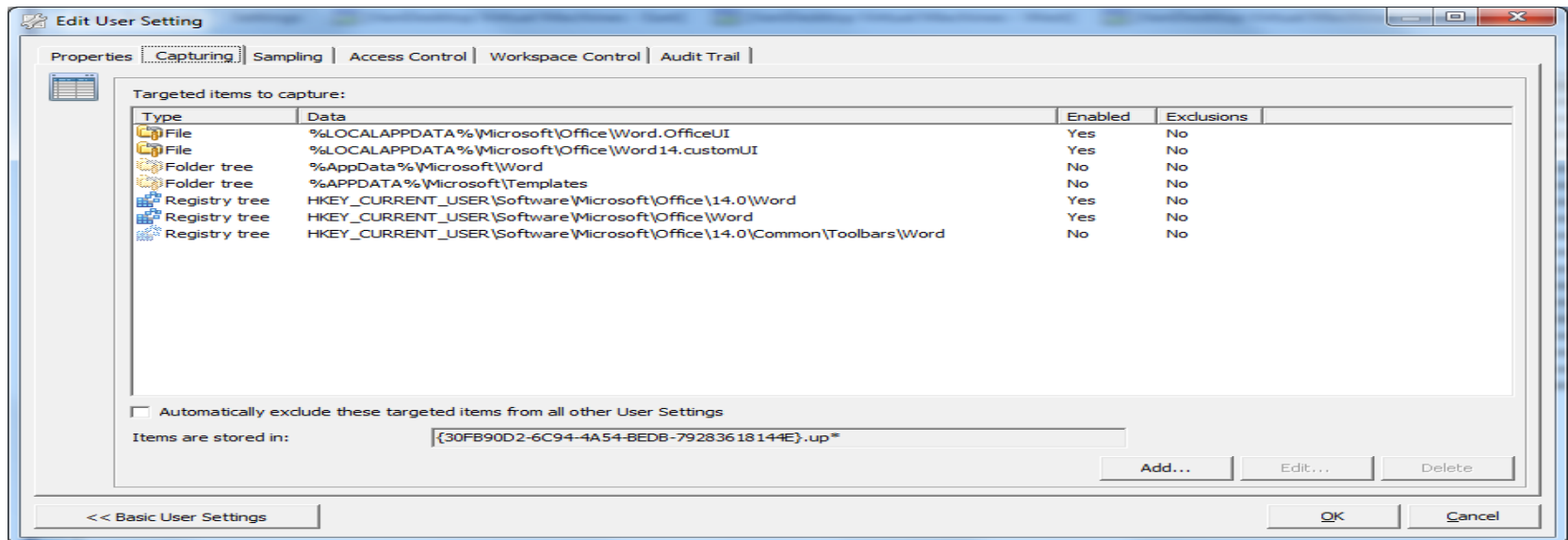
## Windows 7 Desktop

- User desktop and data is stored to network share and in offline folders
  - Client side caching maintains synchronization of data
  - Users can only write to c:\temp & c:\personal folders
  - Redirected Windows Update to c:\temp for local printer installs
- Outlook is configured for cache mode & includes 17+ Addins
- Adopted RES Workstation Manager to manage user settings
  - Provides a consistent user setting experience across multiple platforms: VDI, Loaner, Remote desktops, break fix, etc.
  - Realized a reduction of almost 3 minutes in logon times
    - Key contributors to logon time delays were the processing of Group Policies, Drive mappings, service startups etc.



# Mid-Size Firm Case Study

## RES Capture Example



# Large Firm Case Study

## MAYER • BROWN



# Large Firm Case Study

## MAYER • BROWN

- ◆ Windows 7 Enterprise SP1, HP Client Automation Enterprise 7.80, Highly Customized Microsoft Deployment Toolkit 2010 Update 1, USMT 4.0, and heavy use of group policy preferences
- ◆ Recent migration from Windows XP to Windows 7
- ◆ Application compatibility issues and migrations times
- ◆ Currently Implementing Microsoft System Center Configuration Manager 2012 SP1

# Discussion Topics

Are you considering Windows 8 / Office 2013 / Hybrid?

# Discussion Topics

How Does Your Firm Approach Security?

# Discussion Topics

Hybrid IT Approach to Cloud

# Discussion Topics

Application Compatibility

# Discussion Topics

Approach to POC And Pilot



# Discussion Topics

App Store

# Discussion Topics

IT Services Lifecycle Management

# Audience QA

